

GODREJ NURTURE

SECTOR 150, NOIDA

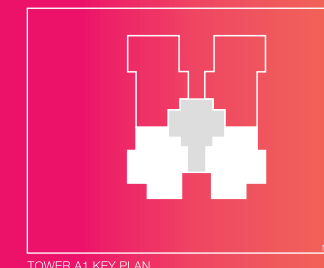
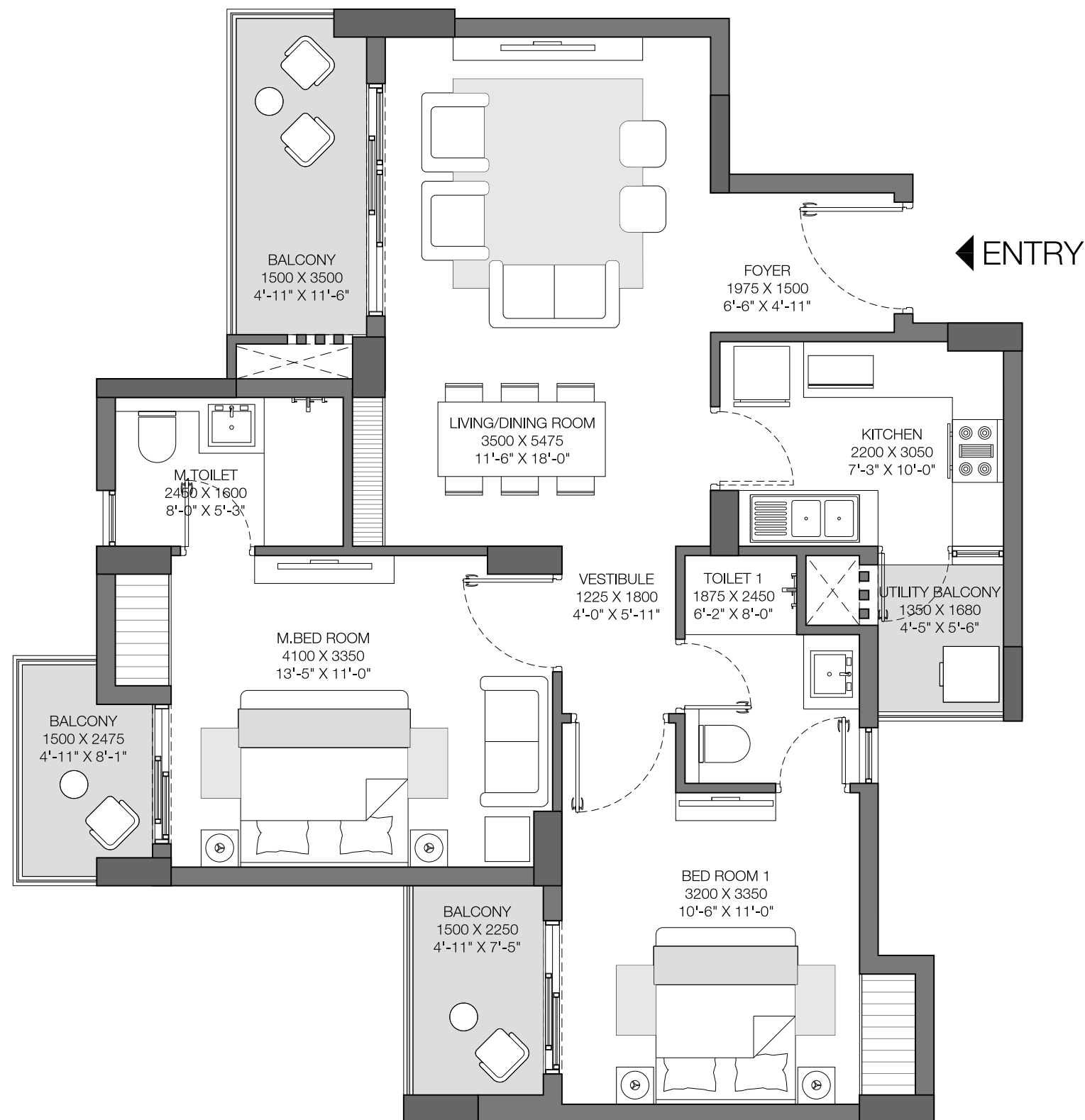
TOWER A1 & A2

2 BHK

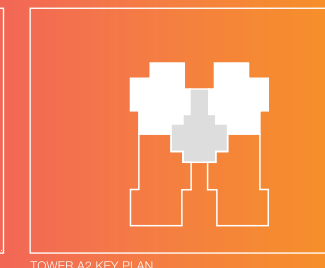
Unit Carpet Area: 69.20 SQ.M.

Exclusive Area: 14.08 SQ.M.

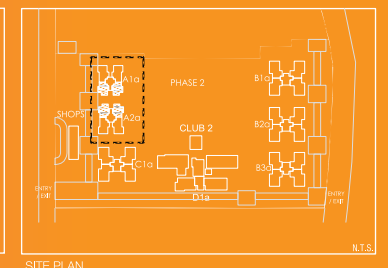
Total Area: 83.28 SQ.M.



TOWER A1 KEY PLAN



TOWER A2 KEY PLAN



SITE PLAN



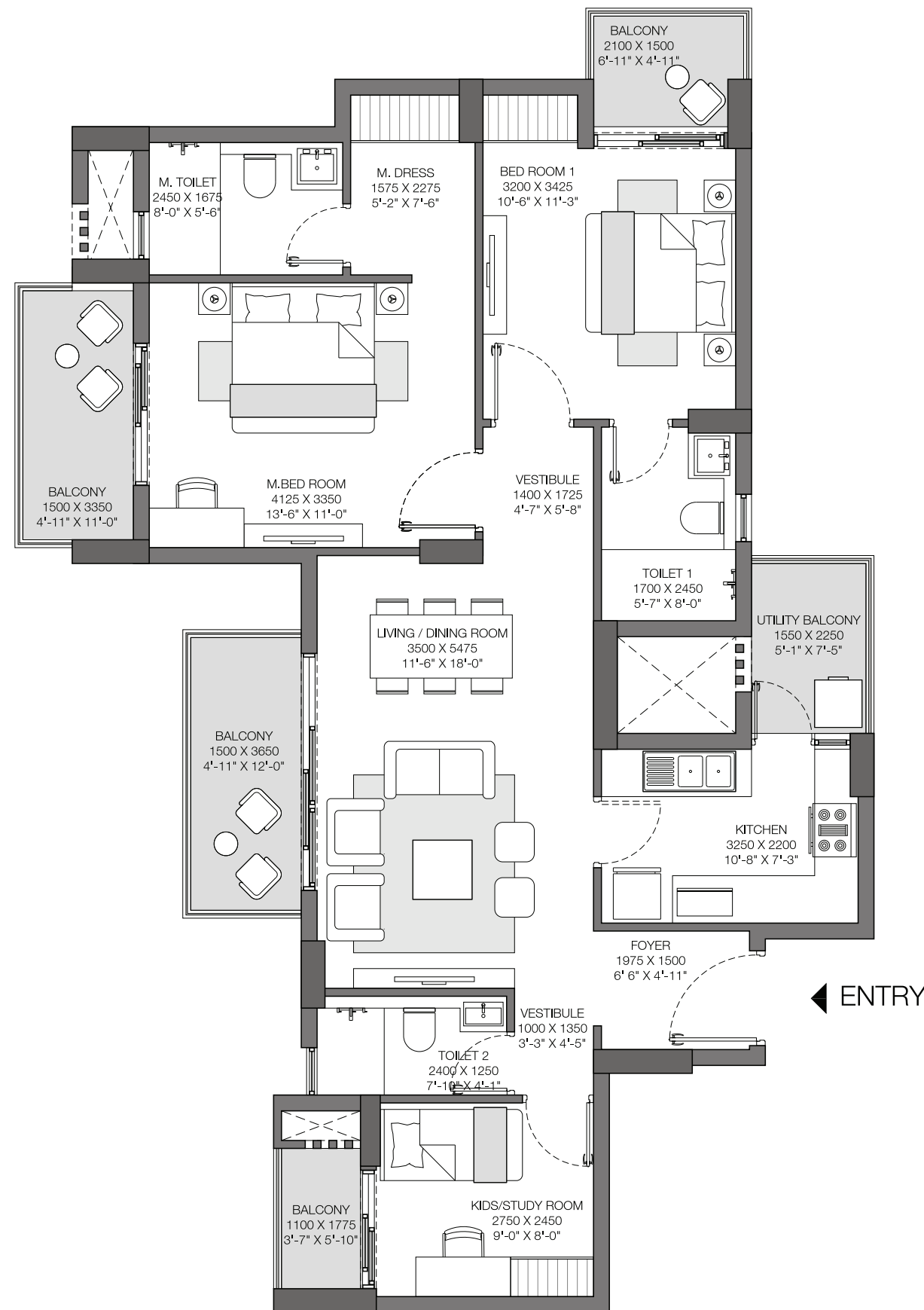
RERA Registration No. UPRERAPRJ17861

website- <http://up-rera.in>. Building Plan dated 30.09.2016 bearing No. IV-1490/929.

This is not an offer, an invitation to offer and/or commitment of any nature. This contains artistic impressions and no warranty is implicitly given that the completed development will comply in any degree with such artist's impressions as depicted. Recipients are advised to apprise themselves of the necessary & relevant information of the project prior to making any purchase decisions. All specifications of the unit shall be as per the final agreement between the Parties. Tower A1, A2, C1 & Iconic Tower D1 are approved as Tower A1a, A2a, C1a, D1a respectively in the approved building plan. The present project is being developed by Brick Rise Developers Pvt. Ltd. (A subsidiary of Lotus Greens Constructions Pvt. Ltd.) who has appointed Godrej Properties Limited as the Development Manager for the same. Brick Rise Developers Pvt. Ltd. has mortgaged the project lands with Indusland Bank Ltd and NOC shall be provided as and when required. Official website for the project is www.godrejproperties.com. Please do not rely on any other website.

GODREJ NURTURE

SECTOR 150, NOIDA



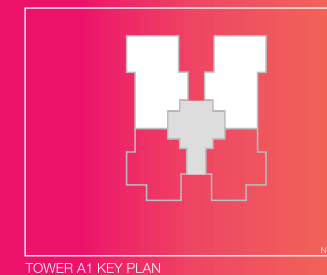
TOWER A1 & A2

3 RHK

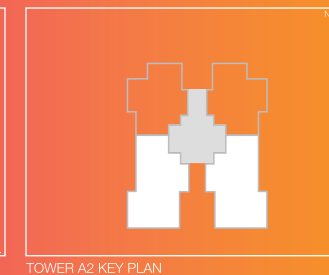
Unit Carpet Area: 83.30 SQ.M.

Exclusive Area: 18.70 SQ.M.

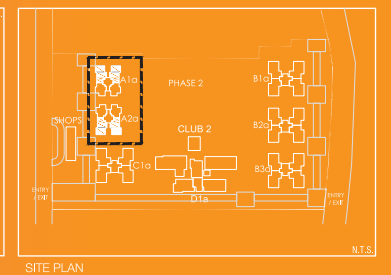
Total Area: 102.00 SQ.M.



TOWER A1 KEY PLAN



TOWER A2 KEY PLAN



SITE PLAN



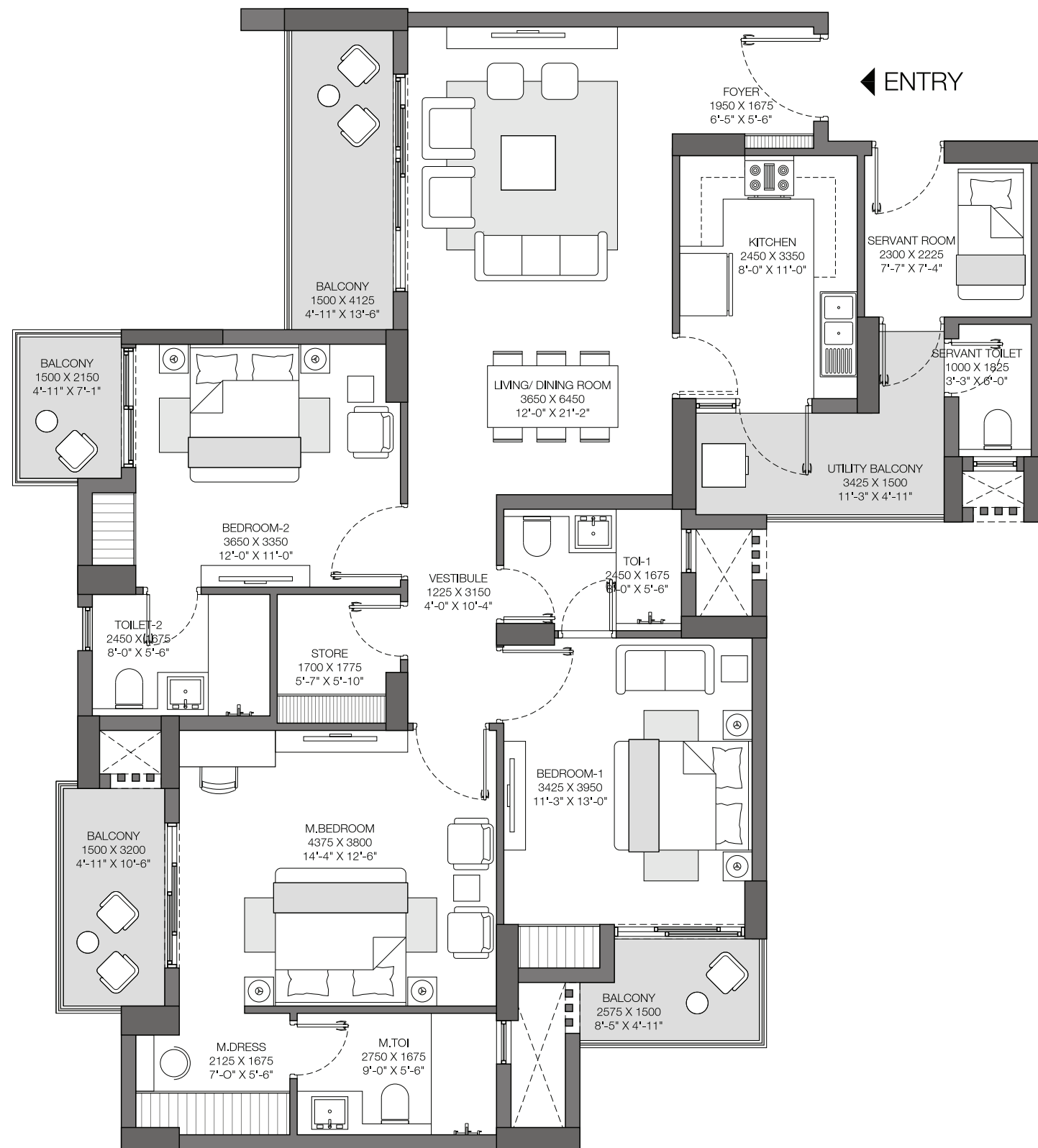
RERA Registration No. UPRERAPRJ17861

website- <http://up-rera.in>. Building Plan dated 30.09.2016 bearing No. IV-1490/929.

This is not an offer, an invitation to offer and/or commitment of any nature. This contains artistic impressions and no warranty is implicitly given that the completed development will comply in any degree with such artist's impressions as depicted. Recipients are advised to apprise themselves of the necessary & relevant information of the project prior to making any purchase decisions. All specifications of the unit shall be as per the final agreement between the Parties. Tower A1, A2, C1 & Iconic Tower D1 are approved as Tower A1a, A2a, C1a, D1a respectively in the approved building plan. The present project is being developed by Brick Rise Developers Pvt. Ltd. (A subsidiary of Lotus Greens Constructions Pvt. Ltd.) who has appointed Godrej Properties Limited as the Development Manager for the same. Brick Rise Developers Pvt. Ltd. has mortgaged the project lands with Indusland Bank Ltd and NOC shall be provided as and when required. Official website for the project is www.godrejproperties.com. Please do not rely on any other website.

GODREJ NURTURE

SECTOR 150, NOIDA



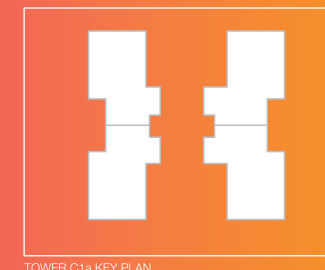
TOWER C1

3BHK+2 STORE / UTILITY

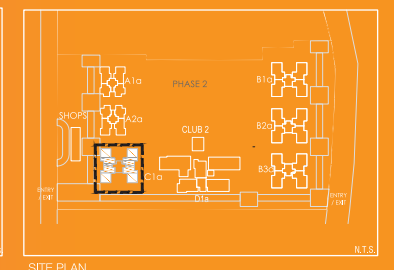
Unit Carpet Area: 113.60 SQ.M.

Exclusive Area: 23.54 SQ.M.

Total Area: 137.14 SQ.M.



TOWER C1a KEY PLAN



SITE PLAN



RERA Registration No. UPRERAPRJ17861

website- <http://up-rera.in>. Building Plan dated 30.09.2016 bearing No. IV-1490/929.

This is not an offer, an invitation to offer and/or commitment of any nature. This contains artistic impressions and no warranty is implicitly given that the completed development will comply in any degree with such artist's impressions as depicted. Recipients are advised to apprise themselves of the necessary & relevant information of the project prior to making any purchase decisions.. All specifications of the unit shall be as per the final agreement between the Parties. Tower A1, A2, C1 & Iconic Tower D1 are approved as Tower A1a, A2a, C1a, D1a respectively in the approved building plan. The present project is being developed by Brick Rise Developers Pvt. Ltd. (A subsidiary of Lotus Greens Constructions Pvt. Ltd.) who has appointed Godrej Properties Limited as the Development Manager for the same. Brick Rise Developers Pvt. Ltd. has mortgaged the project lands with Indusland Bank Ltd and NOC shall be provided as and when required. Official website for the project is www.godrejproperties.com. Please do not rely on any other website.

GODREJ NURTURE

SECTOR 150, NOIDA

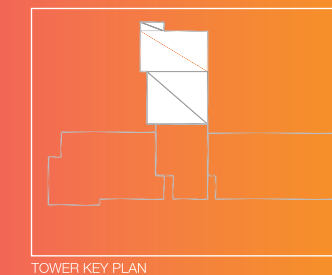
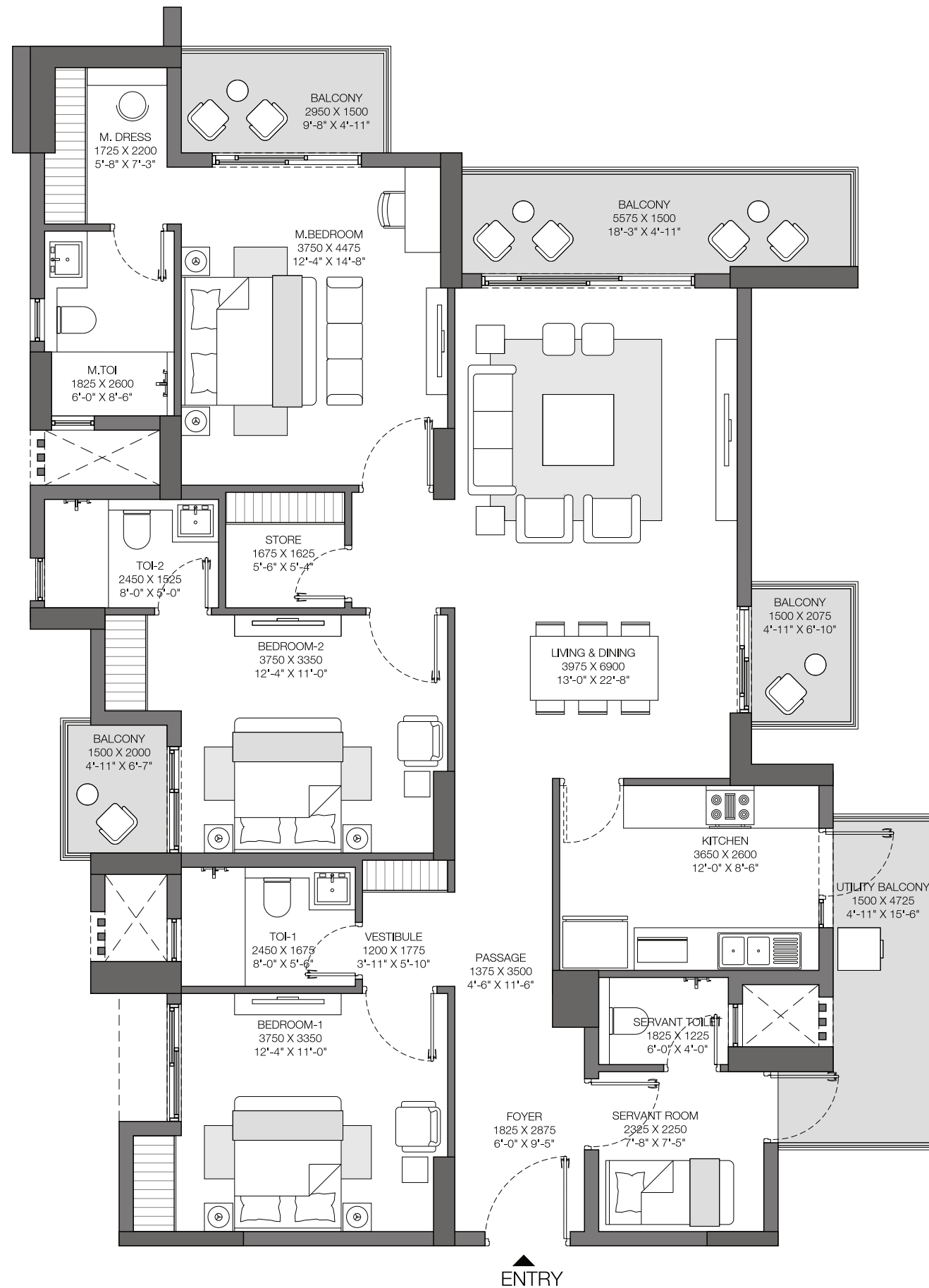
ICONIC TOWER D1

3BHK + 2 STORE / UTILITY

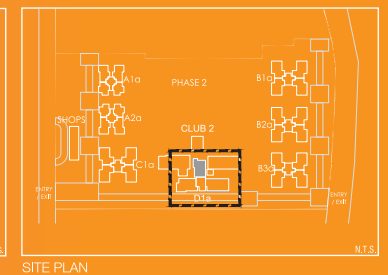
Unit Carpet Area: 126.40 SQ.M.

Exclusive Area: 26.50 SQ.M.

Total Area: 152.90 SQ.M.



TOWER KEY PLAN



SITE PLAN



RERA Registration No. UPRERAPRJ17861

website- <http://up-rera.in>. Building Plan dated 30.09.2016 bearing No. IV-1490/929.

This is not an offer, an invitation to offer and/or commitment of any nature. This contains artistic impressions and no warranty is implicitly given that the completed development will comply in any degree with such artist's impressions as depicted. Recipients are advised to apprise themselves of the necessary & relevant information of the project prior to making any purchase decisions. All specifications of the unit shall be as per the final agreement between the Parties. Tower A1, A2, C1 & Iconic Tower D1 are approved as Tower A1a, A2a, C1a, D1a respectively in the approved building plan. The present project is being developed by Brick Rise Developers Pvt. Ltd. (A subsidiary of Lotus Greens Constructions Pvt. Ltd.) who has appointed Godrej Properties Limited as the Development Manager for the same. Brick Rise Developers Pvt. Ltd. has mortgaged the project lands with Indusland Bank Ltd and NOC shall be provided as and when required. Official website for the project is www.godrejproperties.com. Please do not rely on any other website.

GODREJ NURTURE

SECTOR 150, NOIDA

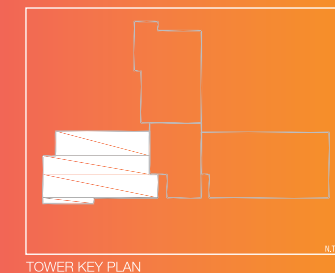
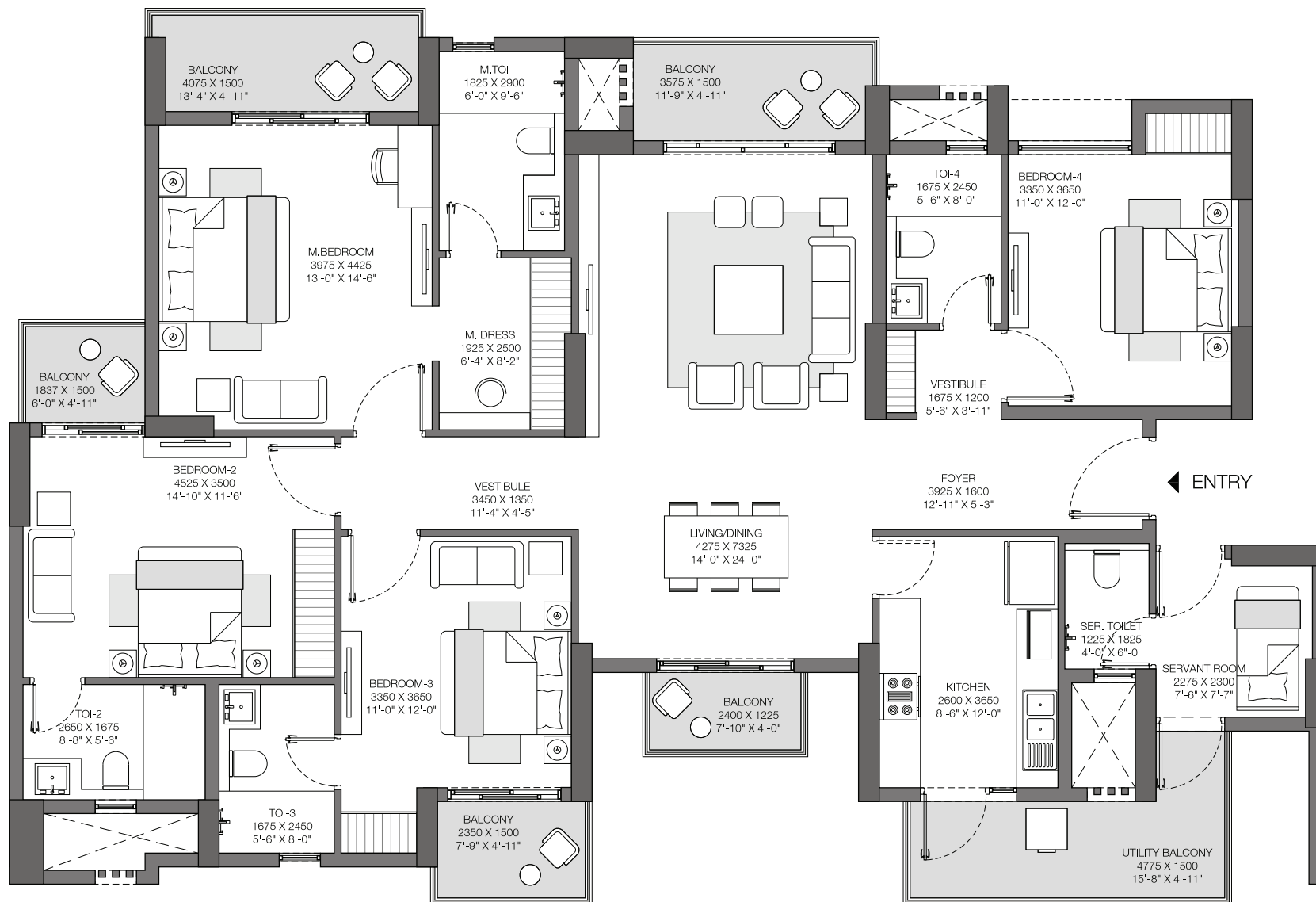
ICONIC TOWER D1

4BHK + UTILITY / STORE

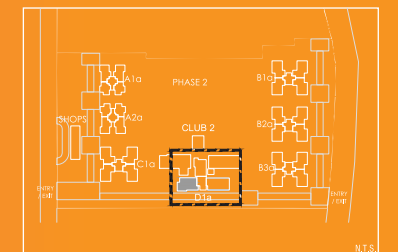
Unit Carpet Area: 150.36 SQ.M.

Exclusive Area: 28.70 SQ.M.

Total Area: 179.06 SQ.M.



TOWER KEY PLAN



SITE PLAN



RERA Registration No. UPRERAPRJ17861

website- <http://up-rera.in>. Building Plan dated 30.09.2016 bearing No. IV-1490/929.

This is not an offer, an invitation to offer and/or commitment of any nature. This contains artistic impressions and no warranty is implicitly given that the completed development will comply in any degree with such artist's impressions as depicted. Recipients are advised to apprise themselves of the necessary & relevant information of the project prior to making any purchase decisions. All specifications of the unit shall be as per the final agreement between the Parties. Tower A1, A2, C1 & Iconic Tower D1 are approved as Tower A1a, A2a, C1a, D1a respectively in the approved building plan. The present project is being developed by Brick Rise Developers Pvt. Ltd. (A subsidiary of Lotus Greens Constructions Pvt. Ltd.) who has appointed Godrej Properties Limited as the Development Manager for the same. Brick Rise Developers Pvt. Ltd. has mortgaged the project lands with Indusland Bank Ltd and NOC shall be provided as and when required. Official website for the project is www.godrejproperties.com. Please do not rely on any other website.

GODREJ NURTURE

SECTOR 150, NOIDA

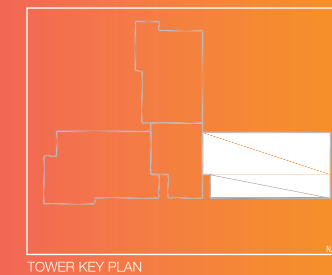
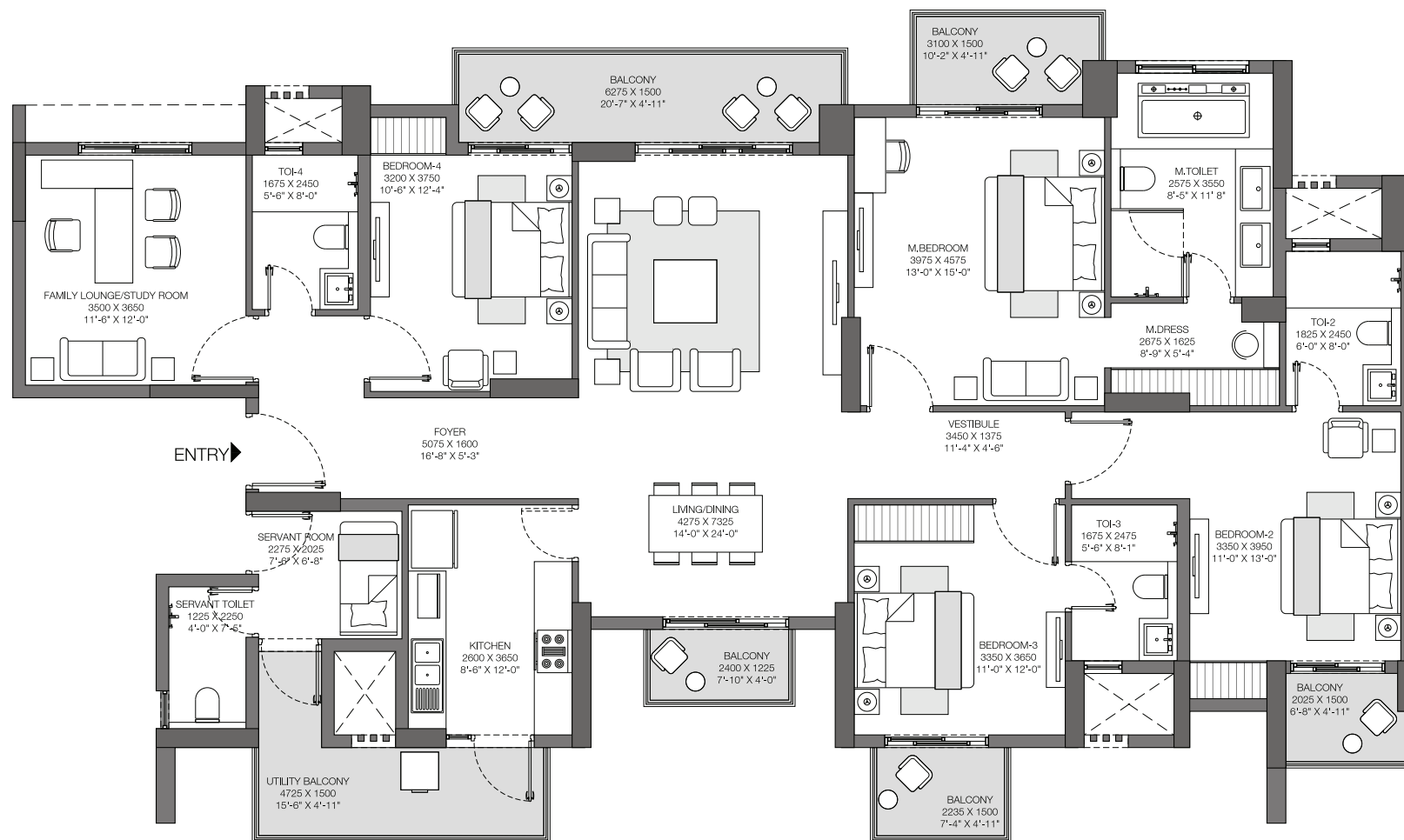
ICONIC TOWER D1

4BHK + UTILITY / STORE
+FAMILY LOUNGE / STUDY

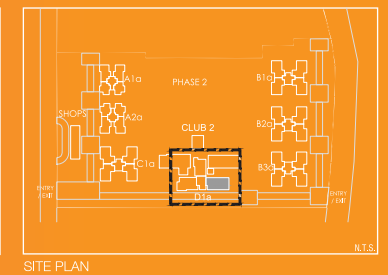
Unit Carpet Area: 169.20 SQ.M.

Exclusive Area: 32.00 SQ.M.

Total Area: 201.20 SQ.M.



TOWER KEY PLAN



SITE PLAN



RERA Registration No. UPRERAPRJ17861

website- <http://up-rera.in>. Building Plan dated 30.09.2016 bearing No. IV-1490/929.

This is not an offer, an invitation to offer and/or commitment of any nature. This contains artistic impressions and no warranty is implicitly given that the completed development will comply in any degree with such artist's impressions as depicted. Recipients are advised to apprise themselves of the necessary & relevant information of the project prior to making any purchase decisions. All specifications of the unit shall be as per the final agreement between the Parties. Tower A1, A2, C1 & Iconic Tower D1 are approved as Tower A1a, A2a, C1a, D1a respectively in the approved building plan. The present project is being developed by Brick Rise Developers Pvt. Ltd. (A subsidiary of Lotus Greens Constructions Pvt. Ltd.) who has appointed Godrej Properties Limited as the Development Manager for the same. Brick Rise Developers Pvt. Ltd. has mortgaged the project lands with Indusland Bank Ltd and NOC shall be provided as and when required. Official website for the project is www.godrejproperties.com. Please do not rely on any other website.